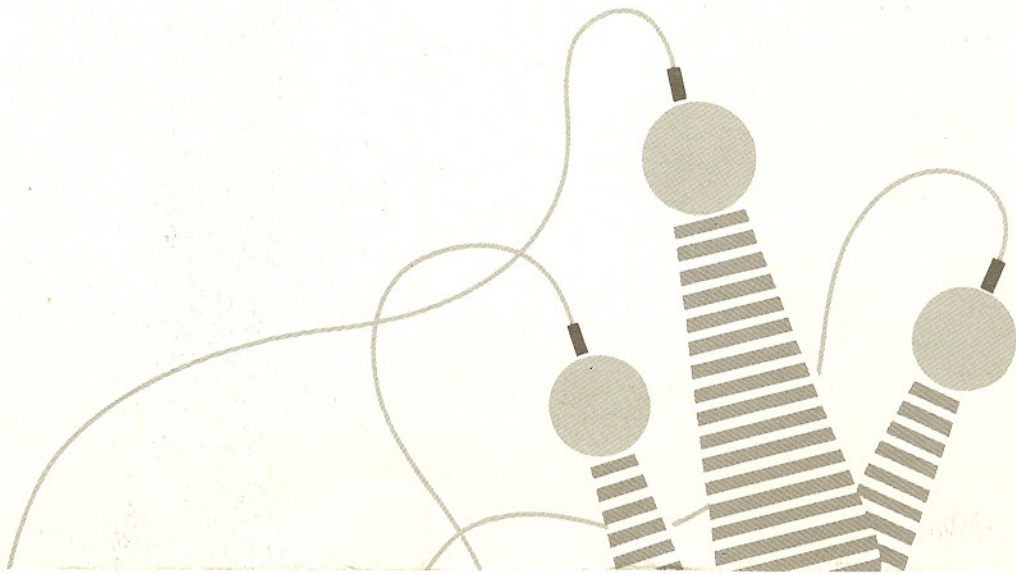


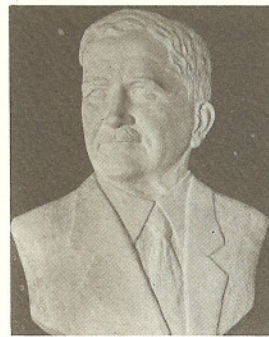
Dedication Program

SCATTERGOOD STEAM PLANT

LOS ANGELES DEPARTMENT OF WATER AND POWER



IN
MEMORY
AND
HONOR
OF
EZRA F.
SCATTERGOOD



Ezra F. Scattergood 1871-1947
Founder and First Chief Electrical Engineer
and General Manager of the Power System
of the City of Los Angeles.

Dedication of the Scattergood Steam Plant is a tribute to the genius and leadership of Ezra F. Scattergood, the father of the municipal Power System of Los Angeles. From his earliest association with the City of Los Angeles in 1906, he devoted more than 40 years to the unselfish service of the people of this city, having as his constant goal the providing of ample low cost power to enable the community to grow and prosper. Through his labors, the citizen-owned Power System was established and became one of the most important factors in the remarkable growth and development of Los Angeles.

The date of September 10, 1959, for the dedication of the Scattergood Steam Plant is significant as the 50th Anniversary of the establishment of the Bureau of Los Angeles Aqueduct Power, with Mr. Scattergood as Chief Electrical Engineer. This marked the beginning of a program by the city to develop the power potential of the Los Angeles Owens River Aqueduct, then in construction. In the next two years, the people of Los Angeles gave their enthusiastic

support by approving a \$3,500,000 bond issue for construction of power plants on the aqueduct and by voting overwhelmingly in favor of the city establishing its own power system to distribute electricity to the community. The city's new Department of Public Service, established in 1911, included a Bureau of Power and Light under Mr. Scattergood along with a Bureau of Water Works and Supply under William Mulholland. This organization became the Department of Water and Power in 1925.

Mr. Scattergood was one of Southern California's staunchest leaders in the struggle to win Federal government approval for the Boulder Canyon Project which resulted in construction of Hoover Dam and its great power plant serving Los Angeles and the Southwest.

As an interesting comparison, the Scattergood Steam Plant when fully developed as planned will have a total power capacity almost equal to the mighty Hoover Dam Power Plant which Mr. Scattergood worked so hard to bring into being.

Dedication Program

SCATTERGOOD STEAM PLANT

THURSDAY, SEPTEMBER 10, 1959

WELCOME AND INTRODUCTIONS.....BURTON S. GRANT
Assistant General Manager and Chief Engineer
Department of Water and Power

EULOGY: EZRA F. SCATTERGOOD'S
HISTORIC CONTRIBUTIONWILLIAM S. PETERSON
General Manager and Chief Engineer
Department of Water and Power

PRESENTATION OF SCATTERGOOD STEAM PLANT
TO THE CITIZENS OF LOS ANGELES.....J. C. MOLLER, JR.
President
Board of Water and Power Commissioners

ACCEPTANCE FOR THE CITIZENS OF LOS ANGELESJOHN S. GIBSON, JR.
President
Los Angeles City Council
and Acting Mayor of Los Angeles

UNVEILING OF MEMORIAL PLAQUE
AND DEDICATION.....MISS ELISABETH SCATTERGOOD

GUIDED TOURS

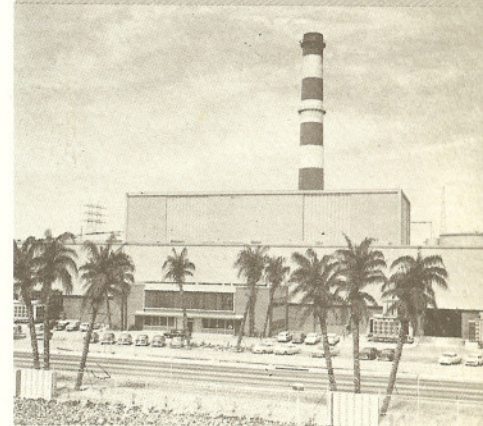
Guided tours of the Scattergood Steam Plant will be available to guests at the dedication, preceding the luncheon program, and immediately following, starting at 2 p.m. Time required for tour approximately one-half hour.

Guided tours will be available to the general public during Open House at Scattergood Steam Plant, Friday and Saturday, September 11 and 12, from 10 a.m. to 9 p.m., and Sunday, September 13, from 10 a.m. to 6 p.m.

LOS ANGELES CITY-OWNED



DEPARTMENT OF WATER & POWER



BOARD OF WATER AND POWER COMMISSIONERS

J. C. MOLLER, JR., *President*
W. BALLENTINE HENLEY, *Vice-President*
W. A. SIMPSON, JR.
J. A. THOMPSON
LOYD WRIGHT

JOSEPH L. WILLIAMS, *Secretary*

DEPARTMENT OF WATER AND POWER

WILLIAM S. PETERSON
General Manager and Chief Engineer
BURTON S. GRANT
Assistant General Manager and Chief Engineer
SAMUEL B. NELSON
Chief Engineer of Water Works and Assistant Manager
IVAN L. BATEMAN
Chief Electrical Engineer and Assistant Manager
FRANK TWOHY
Controller
GEORGE C. SOPP
Joint System Head and Assistant Manager
GILMORE TILLMAN
Chief Assistant City Attorney for Water and Power

POWER SYSTEM

IVAN L. BATEMAN, *Chief Electrical Engineer*
BRADLEY COZZENS, *Assistant Chief Electrical Engineer*
A. L. WILLIAMS, *Assistant Chief Electrical Engineer*
E. L. KANOUSE, *Engineer in Charge*
Design and Construction Division
T. M. BLAKESLEE, *Engineer in Charge*
Operating and Maintenance Division
CLAYTON M. ALLEN, *Engineer in Charge*
General Plant Division
ROBERT H. COCKFIELD, *Manager*
General Sales Division

DESIGN AND CONSTRUCTION:

STEAM DESIGN B. G. HUME
A. F. FRENCH
H. E. BURKE
J. C. HERRICK
ELECTRICAL DESIGN . . . J. P. STRATFORD
C. M. SHORT
R. A. ERWIN
K. O. CARTWRIGHT

CIVIL & STRUCTURAL DESIGN AND ADMINISTRATIVE

L. T. MARINER
W. A. HUNSUCKER
G. R. LITTLE
L. R. ENGEL
CONSTRUCTION J. F. MARISCAL
W. C. MASON
H. M. WILLIAMS
D. B. ALLEN
D. E. SPARKMAN
S. P. RIVERS
T. J. KEANEY

OPERATION AND MAINTENANCE:

OPERATION A. C. WINGO
F. L. GOSS
R. C. ALEXANDER
W. C. POE

GENERAL PLANT:

R. E. ROWLEY
F. R. GOULD
R. G. BOOTH
A. W. HOWELL